

## Groundwater System - Trentham



All of our supply systems have different sources of water and supply constraints. Please ensure you read the update relevant to your town.

We welcome your feedback on these updates to ensure we are providing information that is relevant and useful.

Send your suggestions and feedback to our postal address:

37- 45 Bridge Street,  
Bendigo 3550 or e-mail to:  
[communications@coliban.com.au](mailto:communications@coliban.com.au)

### What we need for customer supply

Residential customers	Business and Industry	Operational water**	Total (Megalitres)
60ML	30ML	60ML	150ML

Water needs for 12 months based on Permanent Water Savings Rules.

For all current water restriction levels refer to - [www.coliban.com.au](http://www.coliban.com.au)

\*\* Operational water includes all losses eg. evaporation, system losses, seepage and treatment process losses.

### What we currently have access to

Volume in storage (ML)	% Capacity
80.4 ML	89%

Trentham annual ground water licence volume (bore)	Current allocation	Current volume extracted from bore (Megalitres)
48ML	100%	14.9ML

Trentham has two raw water supply sources, a natural spring that fills two storages, plus a 48ML licenced bore that is used during the warmer months to supplement the natural spring supply.

The estimated annual spring flow is 84ML (drought) to 145ML (wet).



### Water restrictions outlook

The water available from the natural spring and the groundwater bore has been sufficient to supply Permanent Water Saving Rules (PWSR) during the last three years.

Similar supply conditions are forecast for the coming 12 months.

Water Restriction Outlook Trentham		
	August	October
<b>Wet</b>	PWSR*	PWSR*
<b>Average</b>	PWSR*	PWSR*
<b>Dry</b>	PWSR*	PWSR*

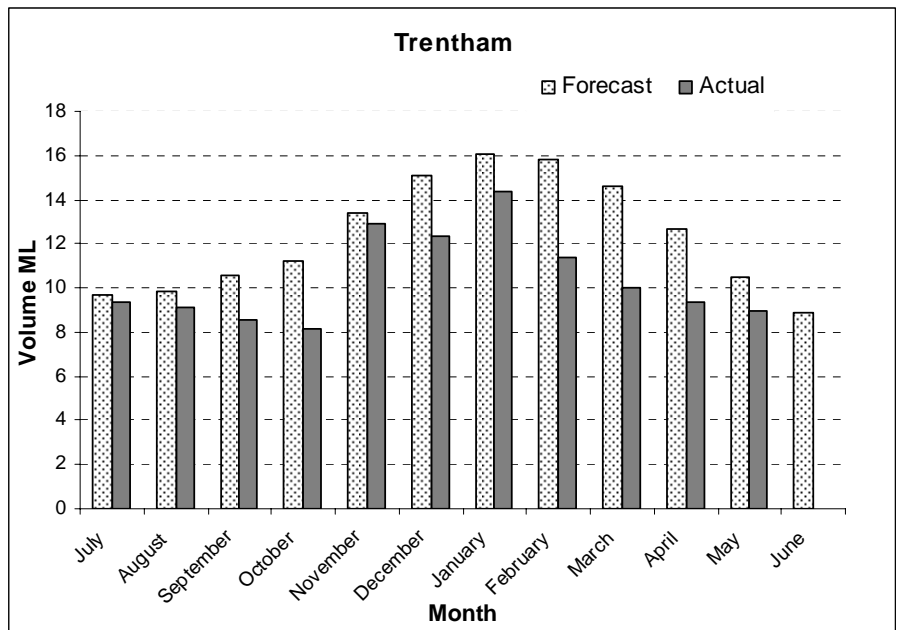
This is based on current storage levels.

- Wet Inflow conditions that have 1 in 10 chance of being exceeded
- Average Inflow conditions that have 5 in 10 chance of being exceeded
- Dry Inflow conditions that have 9 in 10 chance of being exceeded
- \*PWSR Permanent Water Saving Rules

### Consumption - actual versus forecast

The graph below indicates the actual demand in the Trentham groundwater system compared with the forecast demand.

Trentham monthly actual demand for May was 2ML less than the forecast demand. Total consumption for 2009/10 is 115ML which is 25ML less than the forecast demand.



Information in this update is provided as a guide only. Coliban Water reserves the right to alter or change information. 09/06/2010

