

HUNTLY

STEVENSON STREET






General Notes for Standpipe Usage

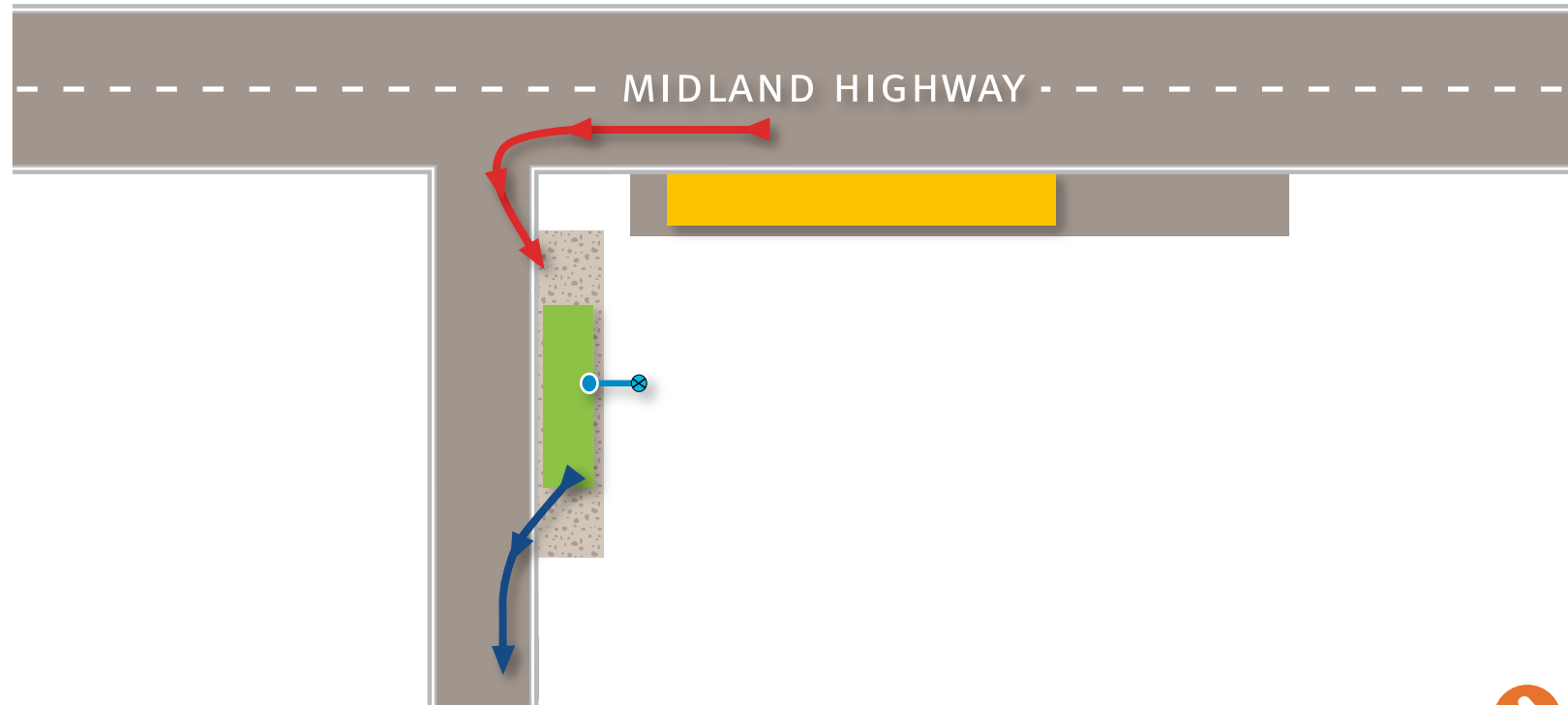
1. Drivers need to ensure they are aware of their vehicle/trailer's legal rated carrying capacity.
2. Vehicles must not leave the site overloaded.
3. When loading tanks ensure that you do not put yourself at risk by climbing in unsafe areas.

Site Specific Notes

1. At this site there is no room to park for queuing at the standpipe. Vehicles need to actually park in the designated parking area on the side of the Midland Highway.
2. Whilst parked in the designated parking area, care shall be taken to avoid interfering with the main traffic flow down the Midland Highway.
3. When leaving the site all vehicles will move slowly – drivers need to take extra care in avoiding a collision with approaching traffic.
4. When leaving this site, drivers need to turn left into Greene Street and then left into Gungurru Road to get back onto the Midland Highway.

Legend

-  Parking Area When Filling
-  Parking Area When Queuing
-  Entry Direction
-  Exit Direction
-  Standpipe Location



Disclaimer: This information is provided as a guide only.
Coliban Water reserves the right to alter or change information. Version A 011210



NORTH