

KANGAROO FLAT STATION STREET






General Notes for Standpipe Usage

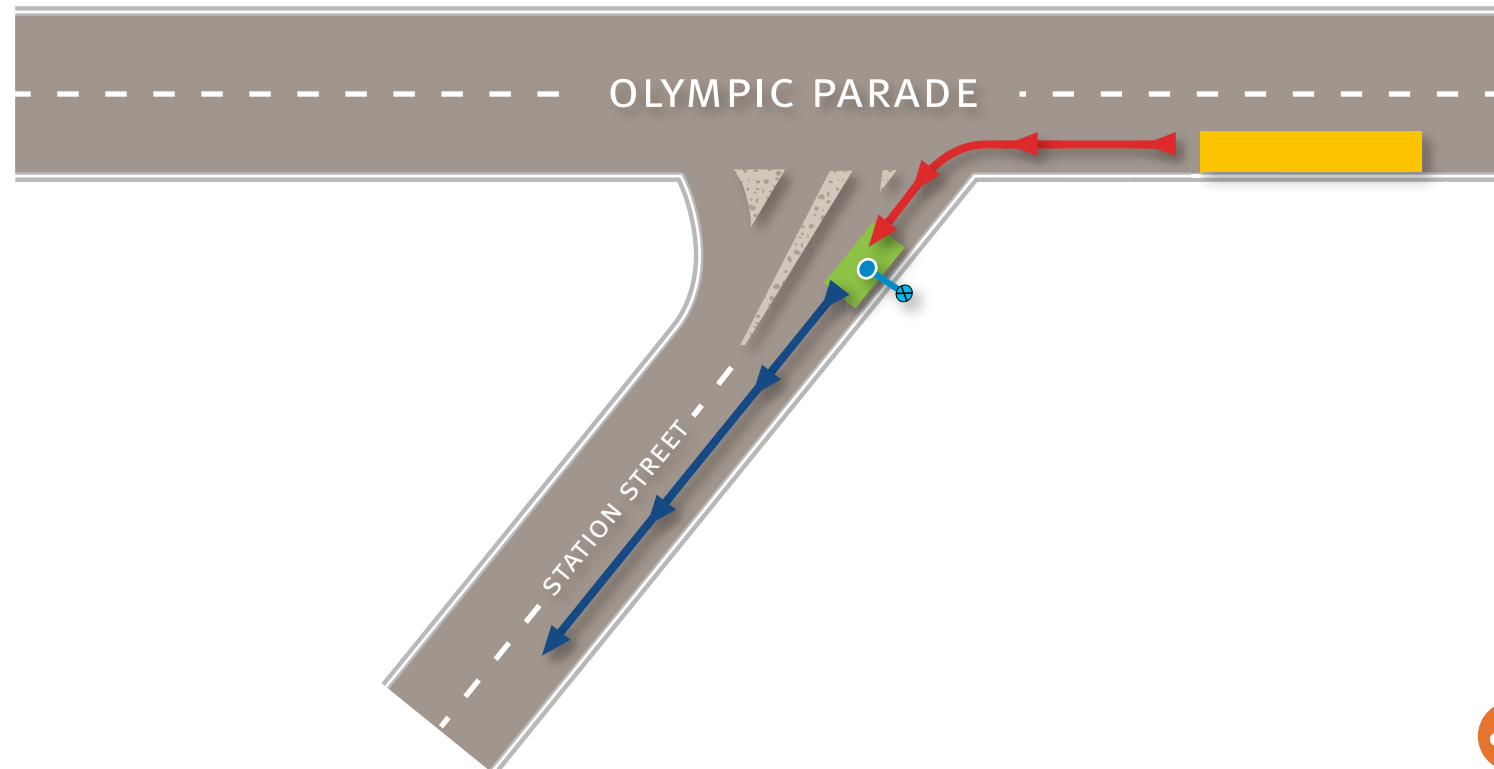
1. Drivers need to ensure they are aware of their vehicle/trailer's legal rated carrying capacity.
2. Vehicles must not leave the site overloaded.
3. When loading tanks ensure that you do not put yourself at risk by climbing in unsafe areas.
4. During filling, drivers need to pay attention to passing vehicles and ensure that you do not enter their pathway.
5. If filling during busy times or times of low-light the driver may need to consider using warning devices:
 - > High visibility vest.
 - > Rotating Flashing lights or car hazard lights.
 - > Cones or bollards can be placed at the rear of the vehicle.

Site Specific Notes

1. If there is no room to park in the yellow queuing area, vehicles need to leave the site and return when there is sufficient room to queue safely.
2. Once loaded, vehicles should not turn out and do a U-Turn onto Olympic Parade – a fully loaded vehicle cannot turn and accelerate quickly enough.
3. When leaving the site all vehicles will move slowly – drivers need to take extra care in avoiding a collision with approaching traffic.

Legend

-  Parking Area When Filling
-  Parking Area When Queuing
-  Entry Direction
-  Exit Direction
-  Standpipe Location



Disclaimer: This information is provided as a guide only.
Coliban Water reserves the right to alter or change information. Version A 011210



NORTH