

Information nights a success

The information nights held in Bendigo and Echuca during May were well received, with 151 plumbers in attendance. Feedback from those that attended and the trade exhibitors at the sessions have ensured further information evenings will be held in the future.

Any plumbers who did not receive an invitation to attend the evening please contact Coliban Water to include your details on our mailing list.

Wang Tapping Saddles

Coliban Water, has on occasions, been contacted by plumbing contractors to shut down a water main due to a leaking tapping saddle they have installed. This can cause considerable disruption to our customers, as well as considerable expense to the plumber for the cost of the repairs.

As a result, pressure testing the connection assembly on the host pipe prior to drilling is mandatory. Pressure test to 1600kPa for a period not less than 3 minutes on all under pressure cut – in assemblies.

Tips for Installing Wang Tapping Saddles

1. Thoroughly clean around the water main where the tapping saddle will be located.
2. Check for pitting or gouges on the pipe and relocate the saddle to a different position if these are to be found.
3. Lubricate the saddle rubber using Wang pipe joint & clamp lubricant or an approved pipe lubricant.
4. Use a tension wrench to tension the nuts on the studs to the recommended torque as stated in the box below. Tension saddle to recommended torque again 15 minutes later.

Recommended Stud Tension

<i>Nominal Diameter</i>	<i>Torque</i>
40 – 80mm	45 Nm
100 – 150mm	70 Nm
Above 150mm	80 Nm

Relined Sewerage Mains

Over the last 18 months some sewerage mains in and around Bendigo have been internally relined. The reason this has been undertaken is to eliminate sewerage blockages in the mains caused by tree roots etc.

Coliban Water has specific requirements regarding connection to the relined sewerage mains. The internal diameter of a relined sewerage main is smaller and as such normal PVC fittings will not fit.

The two options over the page are to be used when cutting in a connection point into a relined sewerage main.

Sewerage Blockages

Sewerage blockages are usually caused by a number of factors including tree roots, fat & broken pipes.

Coliban Water recently attended blockages in the sewerage system caused by undelivered pamphlets (junk mail), a whipper snipper and plumbers sewerage rods.

Should you have the misfortune to have your sewerage rods jammed or lost whilst unblocking a drain please contact Coliban Water who will attempt to retrieve the rods for you if they have entered the sewerage main.

Option 1

Using a WANG.O.B. Sewer-off-take

Fully expose and clean host pipe where OB is to be fitted.

Check pipe for any incidents, gouges, notches etc. If found reposition fitting or repair fault. Check clamp and branch are the correct size. Dissassemble clamp.

- Position clamp and align branch on pipe.
- While clamp is positioned on the pipe, mark the inside of the branch on the host pipe.
- Remove clamp from pipe.
- Cut hole in the host pipe to accommodate internal spigot section in to the host pipe.



- Fit clamp to pipe ensuring off-take is positioned over cut hole and internal spigot section is in host pipe.



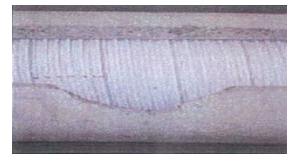
- Tension the clamp in an even manner, beginning at the centre and working diametrically out on all segments keeping gaps between segments even, until final torque is reached.
- As the rubber relaxes it will be necessary to repeat the tensioning operation 15 minutes later until final torque is reached.
- Smooth around the joint where the branch enters the host pipe with two part epoxy.

Bolt Tensioning Guide

Initial = 45Nm
Final = 75Nm

Option 2

Using a Rib Loc Expanda Pipe Bel Saddle



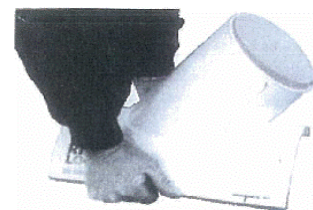
the Bel Saddle is a PVC fitting with a branch, which protrudes through the saddle to suit the wall thickness of the main line, thus positively locating the branch spigot.



Through the Bel Saddle, mark the shape of the hole on the Expanda pipe line.



Cut out the hole on the Expanda pipe, and ensure the edges of the cut are smooth.



Apply two part epoxy to the main line and to the underside of the Bel Saddle and firmly position it on the pipe. Fasten in position with appropriate size worm straps.



Reach in through the branch and apply two part epoxy around the joint to leave a smooth finish.

Once completed, stabilise the Bel Saddle and Expanda pipe by placing concrete around the entire work area.